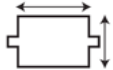
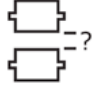
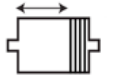
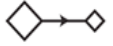



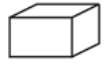

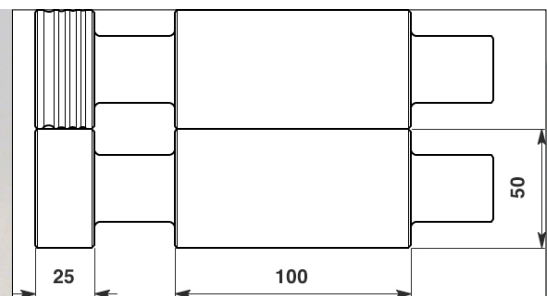


Blech-Walzmaschine Durston DRM-F100 RE

Rolling Mill Durston DRM-F100 RE

	Beschreibung <i>Description</i>	Durston DRM-F100 RE
	Walzenmaß <i>Roll Size</i>	100 mm x 50 mm
	Blechstärke (max.) <i>Flat Capacity (max.)</i>	6 mm
	Blecbreite (max.) <i>Width of Flat</i>	100 mm
	Drahtstärken <i>Wire capacity</i>	n.v. N/A
	Anzahl der Nuten <i>N° of wire grooves</i>	n.v. N/A
	Untersetzung <i>Gear ratio</i>	4 : 1
	Anbau Walzen (Halbrund) <i>Extension rollers (with half rounds Size)</i>	4 ,D' Grooves 4, 3, 2 & 1.5 mm
	Abmessungen (ohne Kurbel) <i>Dimensions (without handle)</i>	360 x 200 x 320 mm
	Netto Gewicht <i>Net weight</i>	30 kg



DURSTON
Rolling Mills